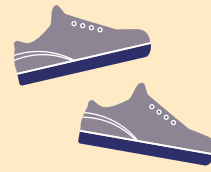


# Shoe Sizing Conversion Chart



**Harper Lace Up Size Conversion**

UK	CM	US	EU
9J	17.5	10J	27
10J	18.3	11J	28
11J	19.1	12J	30
12J	19.9	13	31
13	20.7	1	32
1	21.4	2	33
2	22.3	3	34
3	23.1	4	36
4	24	5	37
5	24.8	6	38
6	25.7	7	39
7	26.5	8	40
8	27.3	9	42
9	28.2	10	43
10	29	11	44.5
11	29.9	12	46
12	30.7	13	47



**Darcy Lace Up Size Conversion**

UK	CM	US	EU
9J	17.2	10J	27
10J	18	11J	28
11J	18.8	12J	29
12J	19.6	12J	31
13	20.4	1	32
1	21.2	2	33
2	22	3	34
3	22.8	4	35
4	23.6	5	37
5	24.2	6	38
6	25	7	39
7	25.8	8	40
8	26.6	9	41
9	27.4	10	42
10	28.2	11	43
11	29	12	44
12	29.8	13	45



**Renaldo Lace Up Size Conversion**

UK	CM	US	EU
5	25.8	6	38
6	26.5	7	39
7	27.2	8	40
8	27.9	9	42
9	28.5	10	43
10	29.2	11	44.5
11	29.9	12	46
12	30.5	13	47

**Quality leather  
school shoes at  
affordable prices**



**T-Bar Shoe Size Conversion**

UK	CM	US	EU
9J	17.2	10J	27
10J	18	11J	28
11J	18.8	12J	29
12J	19.6	12J	31
13	20.4	1	32
1	21.2	2	33
2	22	3	34
3	22.8	4	35
4	23.6	5	37
5	24.2	6	38
6	25	7	39
7	25.8	8	40
8	26.6	9	41
9	27.4	10	42
10	28.2	11	43
11	29	12	44
12	29.8	13	45



**Skate Sneaker Size Conversion**

UK	CM	US	EU
9J	18	10J	27
10J	18.6	11J	28
11J	19.3	12J	30
12J	20	13	31
13	21.3	1	32
1	22	2	33
2	22.6	3	34
3	23.3	4	36
4	24	5	37
5	25.3	6	38
6	26	7	39
7	26.6	8	40
8	27.3	9	42
9	28	10	43
10	29.3	11	44.5
11	30.3	12	46
12	31.3	13	47



**Velcro Sneaker Size Conversion**

UK	MM	CM
9J	199	19.9
10J	206	20.6
11J	212	21.2
12J	219	21.9
13	226	22.6
1	232	23.2
2	239	23.9
3	246	24.6
4	252	25.2
5	259	25.9
6	266	26.6
7	272	27.2
8	279	27.9
9	286	28.6
10	292	29.2
11	299	29.9
12	306	30.6